

ZEB NICKEL CORP.
Suite 507, 837 West Georgia Street
Vancouver, BC
V6C 3N6

May 30, 2023

MANAGEMENT DISCUSSION & ANALYSIS

This management's discussion & analysis ("MD&A") should be read in conjunction with our unaudited condensed interim consolidated financial statements and the accompanying notes for the three months ended March 31, 2023, which were prepared using accounting policies consistent with International Financial Reporting Standards ("IFRS") as issued by the International Accounting Standards Board ("IASB") and in accordance with International Accounting Standards ("IAS") 34, Interim Financial Reporting and are filed on the SEDAR website: www.sedar.com.

All amounts in the condensed interim consolidated financial statements and this MD&A are expressed in Canadian dollars, unless otherwise indicated.

FORWARD LOOKING INFORMATION

Forward-looking statements are necessarily based upon a number of factors and assumptions that, if untrue, could cause actual results, performance or achievements to be materially different from future results, performance or achievements expressed or implied by such statements. Forward-looking statements are based upon a number of estimates and assumptions that, while considered reasonable by the Company at this time, are inherently subject to significant business, economic and competitive uncertainties and contingencies that may cause the Company's actual financial results, performance, or achievements to be materially different from those expressed or implied herein. Some of the material factors or assumptions used to develop forward-looking statements include, without limitation, the future price of precious and base metals, anticipated costs and the Company's ability to fund its programs, the Company's ability to carry on exploration and development activities, the timing and results of drilling programs, the discovery of mineral resources on the Company's mineral properties, the timely receipt of required approvals and permits, including those approvals and permits required for successful project permitting, construction and operation of projects, the costs of operating and exploration expenditures, the Company's ability to operate in a safe, efficient and effective manner, the Company's ability to obtain financing as and when required and on reasonable terms and the continuing impact of the COVID-19 pandemic. Forward-looking information involves known and unknown risks, uncertainties and other factors which may cause the actual results, performance or achievements of the Company to be materially different from any future results, performance or achievements expressed or implied by the forward-looking information. Although Company has attempted to identify important factors that could cause actual actions, events or results to differ materially from those described in forward-looking statements, there may be other factors that cause actions, events or results not to be as anticipated, estimated or intended. There can be no assurance that forward-looking statements will prove to be accurate, as actual results and future events could differ materially from those anticipated in such statements. Known and unknown factors could cause actual results or events to differ materially from those projected in the forward-looking statements. Such factors include, but are not limited to, fluctuations in the currency markets; changes in interest rates; disruption to the credit markets and delays in obtaining financing; inflationary pressures; risks arising from holding derivative instruments (such as credit risk, market liquidity risk and mark-to-market risk); changes in national and local government legislation, taxation, controls, regulations and political or economic developments in Canada, the United States of America, South Africa, or other countries in which the Company may, upon completion of the Transaction, carry on business; business opportunities that may be presented to, or pursued by the Company upon completion of the Transaction; the Company's ability to successfully integrate acquisitions; operating or technical difficulties in connection with business activities; the possibility of cost overruns or unanticipated expenses; employee relations; the risks of obtaining and renewing necessary licenses and permits; diminishing quantities or grades of reserves; adverse changes in the Company's credit rating; the occurrence of natural disasters, hostilities, acts of war or terrorism; and the ongoing global pandemic involving the novel coronavirus. The factors identified above are not intended to represent a complete list of the factors that could affect the Company. Additional factors are noted under the heading "Risk Factors". Should one or more of these risks or uncertainties materialize, or should assumptions underlying the forward-looking information prove incorrect, actual results, performance or

achievement may vary materially from those expressed or implied by the forward-looking information contained in this MD&A. These factors should be carefully considered and readers are cautioned not to place undue reliance on forward-looking information, which speaks only as of the date of this MD&A. All subsequent forward-looking information attributable to the Company herein is expressly qualified in its entirety by the cautionary statements contained in or referred to herein. The Company does not undertake any obligation to release publicly any revisions to, or otherwise update, this forward-looking information to reflect events or circumstances that occur after the date of this MD&A or to reflect the occurrence of unanticipated events, except as may be required under applicable securities laws.

QUALIFIED PERSON, DATA VERIFICATION AND QUALITY CONTROL/QUALITY ASSURANCE

Richard Montjoie has supervised the preparation of the scientific and technical contained in this MD&A and has approved the disclosure herein. Mr. Montjoie is the CEO & VP Exploration of the Company and is not, therefore, independent of the Company. Mr. Montjoie is a registered member of the South African Council for Natural Scientific Professions (SACNASP) membership number 400131/09. Mr. Montjoie holds a M.Sc. Honors in Economic Geology from the University of Witwatersrand, South Africa, and is fellow of the Geological Society of South Africa (GSSA).

The analytical work reported on herein was performed by SGS South Africa Proprietary Limited in Randfontein, South Africa, an internationally recognized analytical services provider that is independent of the Company. Samples were analysed for Ni using a nitric acid leach and sodium peroxide fusion, followed by an ICP-AES finish; and Au, Pt, Pd by lead fusion followed by an ICP-AES finish; and for Rh using palladium collection followed by ICP-OES finish. The sample size varies for the four different targets, however, all samples are quarter core: Target 1 ("ZEB 1") - 2 meter samples; Target 2 - 1 meter samples and 0.50 centimeter samples with increased sulfide content; Target 3 - 0.50 centimeters samples; Target 4 - 1 meter samples. Samples sizes vary to get better definition on mineralised intervals. The Company has not identified drilling, sampling, recovery or other factors that could materially affect the accuracy or reliability of the data disclosed.

A full Quality Control and Quality Assurance (QA/QC) program was conducted on all assay results, and all reported assays were deemed to be acceptable. The program was designed and implemented by Dr. Matthew McCreesh. The QA/QC program is implemented by using Certified Reference Materials (CRM) to verify Laboratory testing equipment calibration, sample homogenisation, repeatability of values and to determine limits of detection. Blanks are inserted to check for sample cross-contamination or instrument contamination. On site sample weights are compared to laboratory sample weights, possible sample swaps are detected when sample weights do not correspond. Field duplicates are pulp samples from the previous assay batches with known analytical results, which are added to the batches and are re-analysed and in theory should be similar in grade to the previous results. Duplicate samples contain all levels of error: natural variability, field sampling, sample size reduction in the prep laboratory, and subsampling at the pulp, plus the analytical error and analytical precision. A Certified Reference Materials (CRMs) or duplicate sample is inserted per 10 field samples. The CRMs are sourced from AMIS (African Mineral Standards) have been tested on a round robin across 25 or more laboratories. Analytical results received from the laboratory must be verified immediately upon arrival. Blank samples reporting grade and standards falling above or below 2 standard deviations should be flagged and re-assayed by the laboratory if necessary. This is to ensure that field and laboratory errors are addressed timeously, and Standard Operating Procedures (SOPs) are reviewed on an ongoing basis as drilling progresses. This limits the incorporation of re-occurring errors into the database and resource estimations. Dr. McCreesh is a registered member of the South African Council for Natural Scientific Professions (SACNASP) membership number 132928. Dr. McCreesh holds a Ph.D. in Geology from the University of Witwatersrand, South Africa, and is member of the Geological Society of South Africa (GSSA).

All Zeb Nickel data was verified before being statistically processed. All data is captured and stored on a cloud based software, this is a centrally managed database containing all aspects of drilling information including logging and assay results. In addition, Zeb Nickel uses ARCGIS, a GIS database system for all spatial information relating to exploration activities. Several other datasets exist including several Excel spreadsheets of information; however, these are derived from the cloud based databases referenced above to ensure that all information is centrally updated and stored.

The data is verified for errors and inconsistencies at each step of handling. Internal checks occur at the project level, where the project geologist or senior exploration geologist, print out hardcopies of geological logs and checks

the drilled core for any logging inaccuracies. The depths of mineralization, sample numbers, widths and lithologies are confirmed. The full process from core logging to data capturing into the database are reviewed on site. Collar positions of a few random selected drill holes are checked in the field during site visits. The data is also rechecked at the stage where it is entered into the 3D-modelling software. In addition to ongoing data checks by project staff, senior management and directors of Zeb Nickel have completed spot audits of the data and processing procedures. Various audits have also been carried out on the recording of drill hole information, assay interpretation and final compilation of the information. The individuals in Zeb Nickel's senior management and certain directors of the Company, who completed the tests and designed the processes, are non-independent mining or geological experts.

OVERVIEW

ZEB Nickel Corp. (the "Company") was incorporated under the Business Corporations Act (British Columbia) on February 6, 2019. The Company was formed for the primary purpose of completing an Initial Public Offering ("IPO") on the TSX Venture Exchange ("Exchange") as a Capital Pool Company as defined in Policy 2.4 of the Exchange. On July 14, 2020, the Company completed its IPO and started trading on the Exchange under the symbol "RHNO.P".

The condensed interim consolidated financial statements have been prepared in accordance with the assumption that the Company will be able to realize its assets and discharge its liabilities in the normal course of business rather than through a process of forced liquidation. The Company has not generated any revenues and its continuing operations as intended are dependent upon its ability to raise further equity. These material uncertainties may cast significant doubt on the entity's ability to continue as a going concern. The condensed interim consolidated financial statements do not include any adjustments to the amounts and classifications of assets and liabilities that might be necessary should the Company be unable to continue business. Such adjustments could be material.

MINERAL PROPERTY, SOUTH AFRICA

The Company controls the rights to the Project, located in the Limpopo Province in the Republic of South Africa, near the platinum mining town of Mokopane. The Project comprises various portions of the farms Uitloop 3 KS, Amatava 41 KS, Bloemhof 4 KS and Piet Potgietersrust Town and Townlands 44 KS, and is located approximately 9 km northeast of the town of Mokopane, in the Mogalakwena Local, and Waterberg District Municipalities of the Limpopo Province, South Africa. The Project consists of three prospecting areas, which have now been amalgamated into a single area by a mining right application that is currently being processed by the DMRE (submitted on July 26, 2019) (the "Mining Right Application").

A mineral resource estimate on nickel mineralization in the Lower Zone Uitloop II body at the Zeb Project (the "Historical Resource Estimate") was completed by MSA Geoservices (Pty) Ltd (MSA) in March 2012 as part of a preliminary economic assessment (the "Historical PEA"). The Historical Resource Estimate and Historical PEA used categories that conformed to CIM Definition Standards on Mineral Resources and Mineral Reserves (CIM, 2010) at the time of completion of the Historical Resource Estimate. The Historical Resource Estimate has an effective date of March 31, 2012 and estimated an Indicated Resource of 485.4 million tonnes averaging 0.245% Ni, with an additional Inferred Resource of 1,115.1 million tonnes at 0.248% Ni, using a cut-off grade of 0.1% TNi (Total Nickel). The Historical Resource Estimate used a nickel price of US\$8.50 per pound or US\$18,739.00 per ton. The mineral resources were quoted as TNi and were restricted to mineralization in the "Sulphide Zone". They were stated as in-situ with no geological losses applied. The mineralization in the Uitloop II body was constrained by a TNi grade-derived envelope. Although the intrusive body is largely coincident with this, there is no uniform geological control on the mineralization across the body.

Additional drilling was determined to be required to further investigate the morphology of the mineralized envelope and to in-fill sparsely-drilled areas. The drill program planned for 2023 is intended to determine a current estimate of mineral resources on the Zeb Project and the extent to which the Historical Resource Estimate may be considered current.

No qualified person has done sufficient work to classify any of the Historical Resource Estimate as current mineral resources or mineral reserves and the Company is not treating the Historical Resource Estimate as current mineral resources or mineral reserves. Investors are cautioned that the Historical Resource Estimate does not mean or imply that economic deposits exist on the Zeb Project.

EXPLORATION TARGETS

The Company is investigating four different exploration targets on the Project, related to four different styles of mineralization. The Company has adopted the terms Target 1 through to Target 4 to describe these targets, and these are summarised as follows:

Target 1 (also referred to as Zeb 1): Disseminated nickel sulfide mineralization hosted in the Lower Zone of the Bushveld Complex.

The south-western Lower Zone (called Uitloop II in academic literature) body has been explored and is the location of the area used in developing the Historical Resource; and the Lower Zone (Uitloop I) body and the chonolith bodies connecting the two Lower Zone bodies still remains open for exploration.

Target 2: Ni-Cu-PGE mineralization hosted in what is thought to be Critical Zone rocks of the Bushveld Complex.

The Critical Zone is the same mineralised horizon which has been mined on the Ivanhoe Mines “Platreef Project” and the Anglo Platinum “Mogalakwena Mining Complex”. The majority of the Critical Zone on the Project Area subcrops beneath the Transvaal Sediments and Lower Zone and is viewed best in drill core.

Target 3: Massive Ni-PGE sulfide mineralization.

The Project has the correct geology to host massive sulfide Ni-PGE mineralization, which could be associated with the Bushveld ultramafic plumbing system interacting with sulphur-rich footwall rocks, both present on the Project. The area is also geologically similar to the Uitkomst Complex which hosts the Nkomati Nickel Mine - a massive Ni-Cu-Cr-PGE sulfide deposit, located in Mpumalanga Province, South Africa.

Target 4: Gold mineralization.

The discovery of gold mineralization on the Project is most likely related to remobilized gold from the adjacent Pietersburg Greenstone Belt and hydrothermal activity, as intersected in Z027 and Z029 in the southwest portion of the Project area. In addition, smaller gold-rich intervals were also intersected in the northwest portion of the Project area, with the same style of mineralization.

RECENT WORK

On March 15, 2022, the Company completed Phase 2 of exploration drilling on the Zeb Project and has successfully intersected what is believed to be Critical Zone lithologies in all drillholes containing Ni-Cu-PGE mineralization. The style of mineralization is similar to that found within the Critical Zone of the Bushveld Complex.

The Critical Zone of the Bushveld Complex is the geological horizon that hosts Platreef-style mineralization in the Northern Limb, which is the mineralized zone currently being mined at Anglo American Platinum’s flagship Mogalakwena Mine, and Ivanhoe Mines Platreef Mine (average depth of 800 m). The location of the Project in relation to Mogalakwena Mine and Platreef Mine is shown in Figure 1 below.

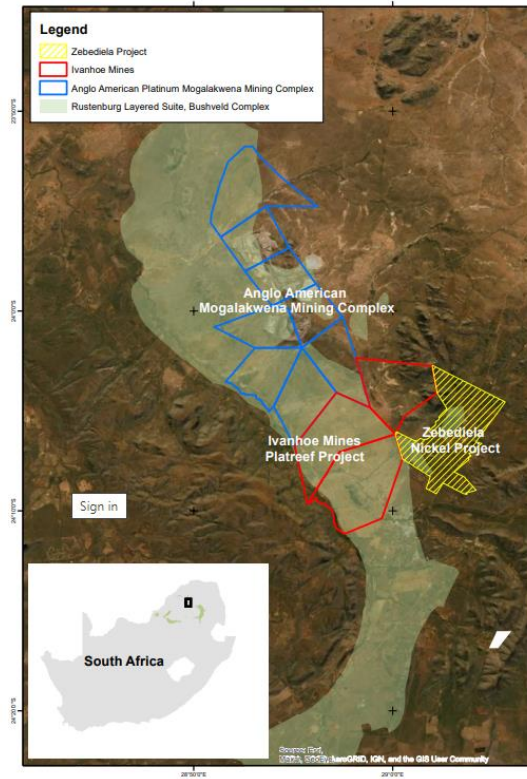


Figure 1: Location of the Zeb Project in relation to Anglo American Platinum’s Mogalakwena Mining Complex and Ivanhoe Mine’s Platreef Project

This phase of drilling is a continuation of the first phase conducted by the Company for a total of 4,901 m in both Phase 1 and Phase 2, targeting higher grade nickel PGE mineralisation in Critical Zone rocks found beneath the area used in developing the Historical Resource Estimate. The Company announced that these Critical Zone rocks have been discovered along a strike length of at least 3 km. 6 holes were completed in the Phase 1 drill campaign and a further 8 holes were completed in the Phase 2 drill campaign.

Exploration results from the drilling campaign are presented in the tables below, and the location of these holes are presented in Figure 2 below. Drill core diameter for all holes is NQ and drill holes are drilled at an inclination of 50 degrees on an azimuth of approximately 45 degrees.

Table 1: Summary of Drilling and Assay Results from the Phase 1 and Phase 2 drill programs

Drillhole ID	Depth From	Depth To	Sample Interval	Depth Below Surface	Ni^	Cu	Pt	Pd	Rh	Au	3PGE + Au*	Mineralization Style
	<i>meters</i>	<i>meters</i>	<i>meters</i>	<i>meters</i>	%	%	<i>g/t</i>	<i>g/t</i>	<i>g/t</i>	<i>g/t</i>	<i>g/t</i>	
Phase 1 Drill Results												
Z017	37.43	415.00	377.57	23.61	0.24	0.01					**	Lower Zone (Target 1)
<i>including</i>	38.00	110.00	72.00	23.97	0.25	0.01					**	Lower Zone (Target 1)
<i>including</i>	124.00	136.00	12.00	78.20	0.33	0.02					**	Lower Zone (Target 1)
<i>including</i>	170.00	178.00	8.00	107.21	0.28	0.01					**	Lower Zone (Target 1)
<i>including</i>	193.00	198.00	5.00	121.72	0.37	0.01					**	Lower Zone (Target 1)
<i>including</i>	212.10	239.60	27.50	133.76	0.25	0.01					**	Lower Zone (Target 1)
<i>including</i>	304.00	308.00	4.00	191.73	0.40	0.02					**	Lower Zone (Target 1)
<i>including</i>	319.63	386.00	66.37	201.58	0.27	0.01					**	Lower Zone (Target 1)
<i>including</i>	412.75	415.00	2.25	260.31	1.67	0.51	0.21	0.41	0.03	0.06	0.71	Lower Zone (Target 1)
Z018	33.00	394.00	361.00	21.48	0.25	0.01					**	Lower Zone (Target 1)
<i>including</i>	88.00	125.19	37.19	57.27	0.30	0.01					**	Lower Zone (Target 1)
<i>including</i>	144.00	171.80	27.80	93.71	0.28	0.01					**	Lower Zone (Target 1)
<i>including</i>	328.00	348.00	20.00	213.45	0.31	0.01					**	Lower Zone (Target 1)
Z019	89.00	103.00	14.00	52.81	0.22	0.06	0.20	0.36	0.02	0.03	0.61	Critical Zone (Target 2)
Z019	133.00	170.80	37.80	78.92	0.29	0.09	0.40	0.68	0.07	0.04	1.19	Critical Zone (Target 2)
<i>including</i>	133.00	142.00	9.00	78.92	0.42	0.15	0.60	1.22	0.08	0.07	1.97	Critical Zone (Target 2)
<i>including</i>	169.00	170.60	1.60	100.29	0.50	0.12	0.73	0.92	0.22	0.04	1.90	Critical Zone (Target 2)
Z020	53.00	71.00	18.00	41.19	0.41	0.13	0.53	1.07	0.10	0.05	1.75	Critical Zone (Target 2)
<i>including</i>	55.00	64.00	9.00	42.74	0.51	0.18	0.73	1.47	0.13	0.07	2.45	Critical Zone (Target 2)
Z020	106.00	145.00	39.00	82.38	0.30	0.11	0.31	0.64	0.06	0.04	1.05	Critical Zone (Target 2)
Z020	174.00	176.07	2.07	135.22	0.59	0.15	0.90	0.95	0.11	0.05	2.00	Critical Zone (Target 2)
Z021	187.00	210.00	23.00	169.62	0.32	0.10	0.36	0.79	0.05	0.05	1.25	Critical Zone (Target 2)
<i>including</i>	194.00	199.00	5.00	175.97	0.48	0.12	0.57	1.45	0.08	0.06	2.16	Critical Zone (Target 2)
Z022	38.08	41.74	3.66	28.87	0.35	0.08	0.30	0.46	0.10	0.03	0.89	Critical Zone (Target 2)
Z022	69.00	76.00	7.00	52.31	0.25	0.08	0.20	0.42	0.02	0.03	0.67	Critical Zone (Target 2)
Z022	95.00	95.50	0.50	72.02	0.39	0.13	5.68	0.63	0.02	0.04	6.37	Critical Zone (Target 2)
Phase 2 Drill Results												
Z023	214.00	217.00	3.00	163.93	0.22	0.11	0.71	0.25	0.03	0.12	1.10	Critical Zone (Target 2)
<i>including</i>	214.50	215.50	1.00	164.32	0.44	0.25	1.80	0.45	0.06	0.24	2.54	Critical Zone (Target 2)
Z024	63.00	212.00	144.03	48.26	0.19						**	Lower Zone (Target 1)
<i>including</i>	155.00	168.78	13.63	118.74	0.23						**	Lower Zone (Target 1)
<i>including</i>	196.23	211.00	2.18	150.32	0.41						**	Lower Zone (Target 1)
Z025	87.00	93.00	5.00	66.65	0.07	0.02	0.08	0.13	0.01	0.01	0.24	Critical Zone (Target 2)
Z026	277.50	290.00	12.50	209.43	0.35	0.15	0.74	0.97	0.06	0.06	1.82	Critical Zone (Target 2)
<i>including</i>	284.00	287.00	3.00	214.35	0.47	0.19	0.70	1.30	0.07	0.06	2.13	Critical Zone (Target 2)
<i>including</i>	288.50	290.00	1.50	217.73	0.41	0.16	0.55	1.20	0.07	0.06	1.88	Critical Zone (Target 2)
Z027	406.50	411.50	5.00	310.02	0.31	0.11	0.23	0.52	0.03	0.05	0.84	Critical Zone (Target 2)
<i>including</i>	406.50	408.50	2.00	310.02	0.32	0.11	0.26	0.59	0.04	0.05	0.94	Critical Zone (Target 2)
Z027	413.00	426.00	13.00	314.98	0.17	0.04	0.15	0.28	0.04	0.03	0.50	Critical Zone (Target 2)

Drillhole ID	Depth From	Depth To	Sample Interval	Depth Below Surface	Ni [^]	Cu	Pt	Pd	Rh	Au	3PGE + Au*	Mineralization Style
<i>Including</i>	420.00	421.50	1.50	320.32	0.69	0.11	0.31	0.67	0.25	0.25	1.27	Critical Zone (Target 2)
Z027	290.00	324.00	33.81	222.15	<0.01	0.01				1.67		Gold Zone Discovery
<i>Including</i>	305.00	310.00	4.81	233.64	<0.01	0.01				5.07		Gold Zone Discovery
Z028	413.00	449.50	36.00	314.98	0.22	0.08	0.24	0.48	0.04	0.03	0.80	Critical Zone (Target 2)
<i>Including</i>	427.00	433.50	6.50	325.65	0.37	0.18	0.54	1.10	0.10	0.06	1.80	Critical Zone (Target 2)
Z029	87.00	375.55	286.36	66.65	0.16	0.02					**	Lower Zone (Target 1)
<i>Including</i>	87.00	114.55	54.55	66.65	0.20	0.02					**	Lower Zone (Target 1)
Z029	387.68	416.00	28.32	296.98	<0.01	0.01	†	†	†	9.05	-	Gold Zone Discovery
<i>Including</i>	387.68	398.54	10.86	296.98	<0.01	0.01	†	†	†	12.21	-	Gold Zone Discovery
<i>Including</i>	402.00	412.64	10.64	307.95	<0.01	0.01	†	†	†	11.25	-	Gold Zone Discovery
Z030 ¹	84.0	347.00	263.00	64.35	0.21	0.01					**	Lower Zone (Target 1)
<i>Including</i>	103.00	110.00	7.00	78.90	0.23	0.01					**	Lower Zone (Target 1)
<i>Including</i>	183.00	272.78	89.78	140.18	0.24	0.01					**	Lower Zone (Target 1)
<i>Including</i>	227.00	237.00	10.00	173.89	0.32	0.01					**	Lower Zone (Target 1)
<i>Including</i>	311.00	333.00	3.00	328.23	0.35	0.01					**	Lower Zone (Target 1)

* 3PGE+Au equals platinum + palladium + rhodium + gold by fire assay with ICP-AES Finish;

** Intersection not assayed for 3PGE+Au, as previous work has revealed that this portion of the orebody typically does not contain PGE's at economic quantities

† Values below detection limit of laboratory

[^]Total Ni assay by complete digestion, representing the silicate and sulfide portion of Ni;

Additional drilling is required to determine true thickness;

"Depth From", "Depth To" and "Sample Thickness" reported are depths from surface down the drill hole;

All drillholes are drilled NQ diameter except for Z024 which was drilled BQ diameter

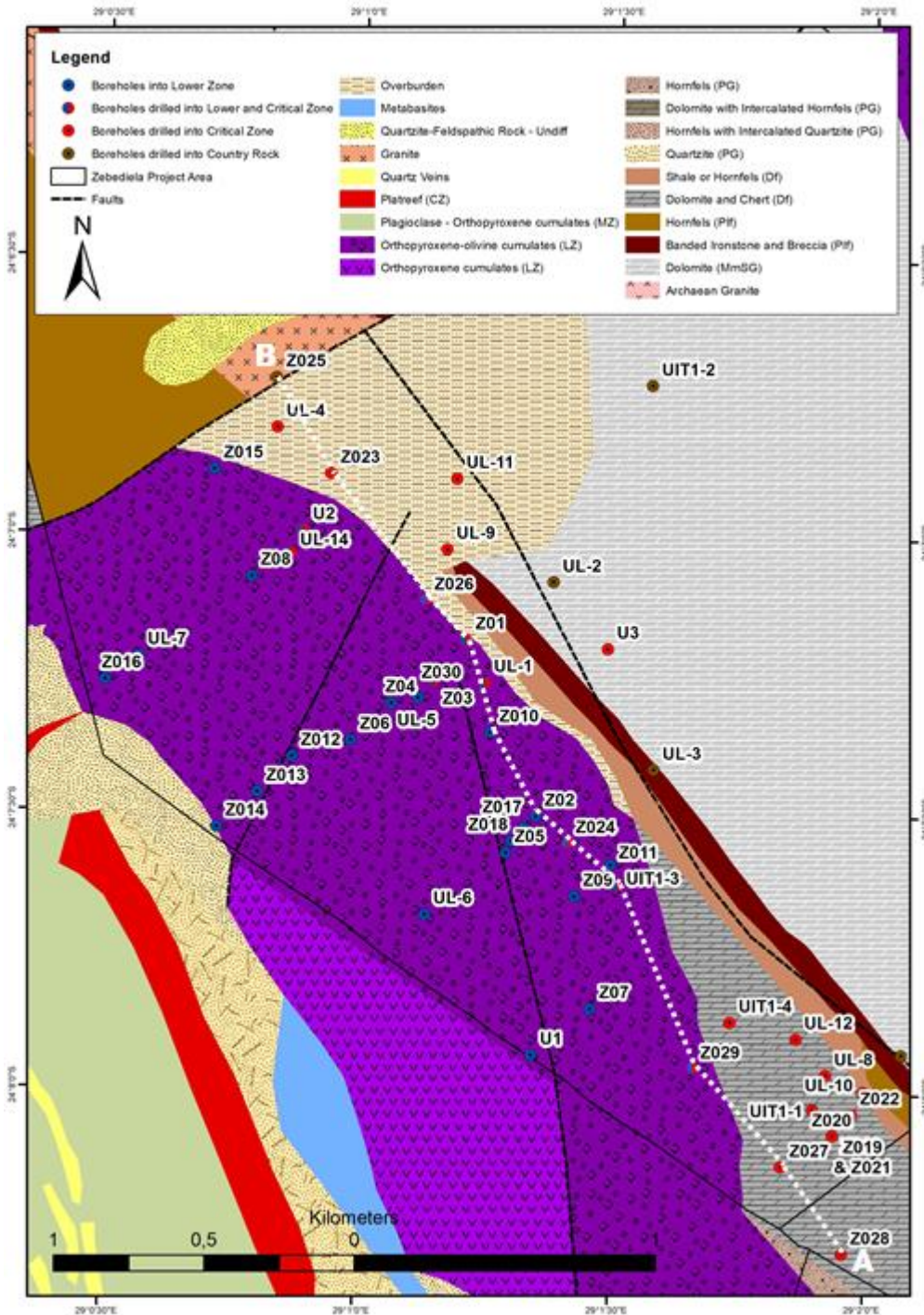


Figure 2: Geological map overlain with the location of all drillholes on the Project area. The white dashed line joining the points “A” and “B” represents the location on surface of the cross-section along strike presented in Figure 3 below.

On September 27, 2022, the Company announced an analysis of historical drilling on the Zeb Project revealed the presence of anomalously high gold mineralization in hole UIT01-5, as referenced in the Technical Report. This hole is located about 530 m north of hole Z026, which also contained anomalously high gold mineralization. The nickel-PGE results of Z026 were reported in a news release on March 15, 2022. Drillhole UIT01-5 intersected 2.45 g/t Au over 1 m from a depth of 93 m to 94 m down the hole, and 0.82 g/t Au over 1 m from a depth of 97 m to 98 m down the hole. Drillhole Z026 intersected 0.68 g/t Au over 1.83 m from a depth of 221.41 m to 223.20, and 1.36 g/t Au over 1.50 m from a depth of 250.50 m to 252 m. There is no drilling between UIT01-5 and Z026.

These two holes are located more than 2 km to the northwest of drillholes Z027 and Z029, the results of which

were reported in a news release on April 12, 2022.

Gold mineralization on the Project is theorised to be related to gold mineralization which occurs on the Pietersburg Greenstone Belt, which hosts the historical Eersteling Gold Mine.

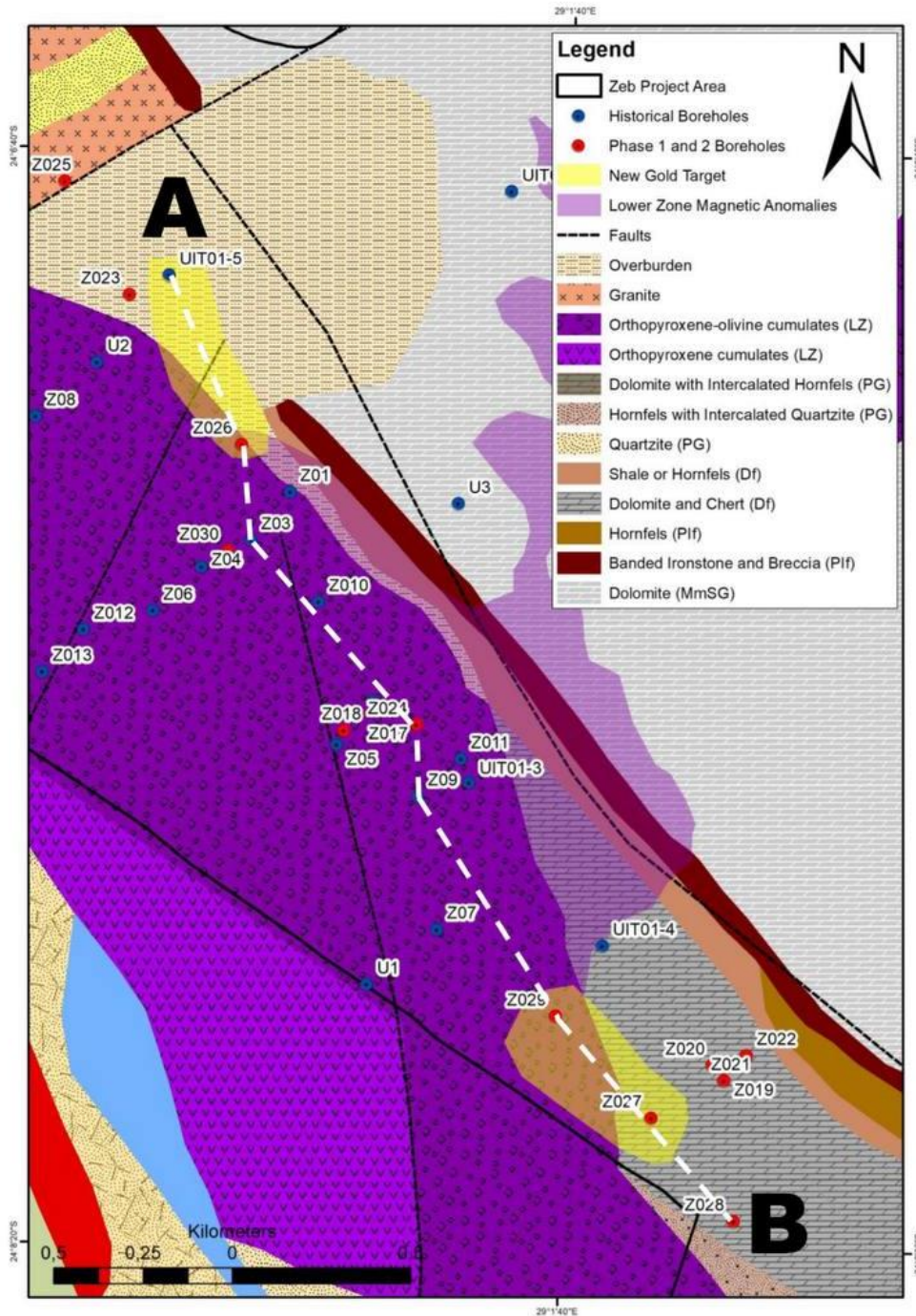


Figure 3: Map showing the location of the target zones of gold mineralization in yellow, based on intersections from Z027 and Z029 in the south, and UIT01-5 and Z026 in the north, with the approximate location of Strike Section A- B as shown in Figure 4 below.

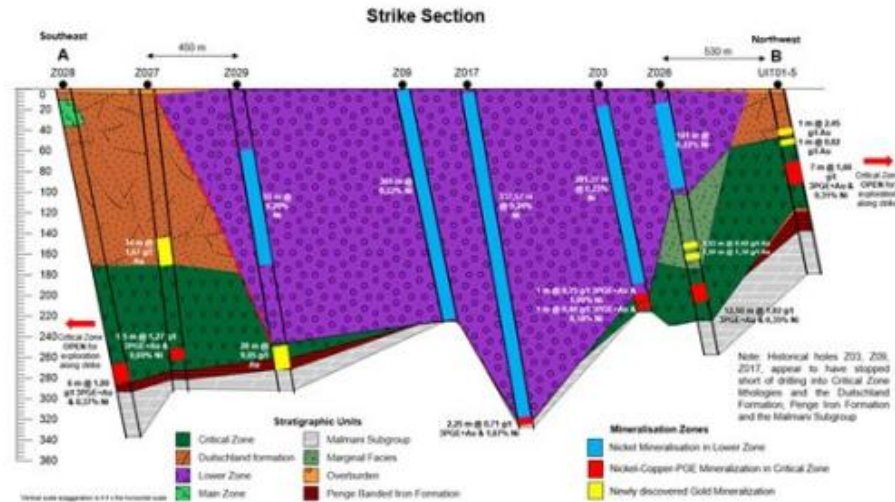


Figure 4: Southeast – northwest strike section along line A – B as shown in Figure 3, showing the location of the gold mineralization in relation to the nickel and nickel-copper-PGE and gold mineralization.

The presence of gold mineralization on both the northern and southern portions of the Project area means that the gold mineralization is a lot more prevalent than initially thought; and improves the chances of the Project hosting an economic gold deposit that may be independent of the known nickel and platinum group element mineralization as documented in the Technical Report, available on the Company's website.

On October 19, 2022, the Company announced that it was commencing with geotechnical drilling as part of a dolomitic stability investigation for the proposed mining infrastructure area which forms part of Zeb's Mining Right Application to the South African Department of Mineral Resources and Energy (DMRE). The Mining Right Application submitted to the DMRE had earmarked certain areas on the Project for surface mining infrastructure, which is underlain by dolomite. The DMRE has requested that the Company perform a dolomitic stability investigation in this prescribed area to ensure that any future surface mining infrastructure is not situated on geotechnically unstable ground, which can be associated with dolomite.

The drilling was conducted by Ntamu Engineers, which is a South African Professional Environmental Consulting agency, with a team of professionals specializing in several environmental science and environmental engineering fields. The drilling followed on the back of a geophysical investigation that consisted of a gravity survey to delineate areas of low densities possibly associated with dissolution cavities.

Drilling of 17 boreholes using an air percussion drilling method were drilled from the 17th to 21st October 2022 as per South African National Standard (SANS) 1936-2. The depths of the drilled boreholes ranged from 15 m to 40 m below surface. Several water strikes and water rest levels were discovered. The final dolomitic study was submitted to the Council for Geosciences on November 2nd, 2022, and the results of the study will be incorporated into future engineering designs.

No assays were done on material collected from these drillholes.

On February 7, 2023, the Company announced full evaluation of the results from both the Phase 1 and Phase 2 drilling campaigns, as reported in News Release dated March 15, 2022, and related these results to all available historical information, updated the exploration model and produced a three-dimensional geological model of the Project area. The Company has identified higher grade zones within the Lower Zone lithologies, being area used in developing the Historical Resource Estimate was estimated. Much of the historical drilling stopped short of full extent of these higher-grade zones, and further drilling into these zones aims to determine if an increase in the grade over that contained in the Historical Resource Estimate can be determined, as illustrated in Figure 5 below.

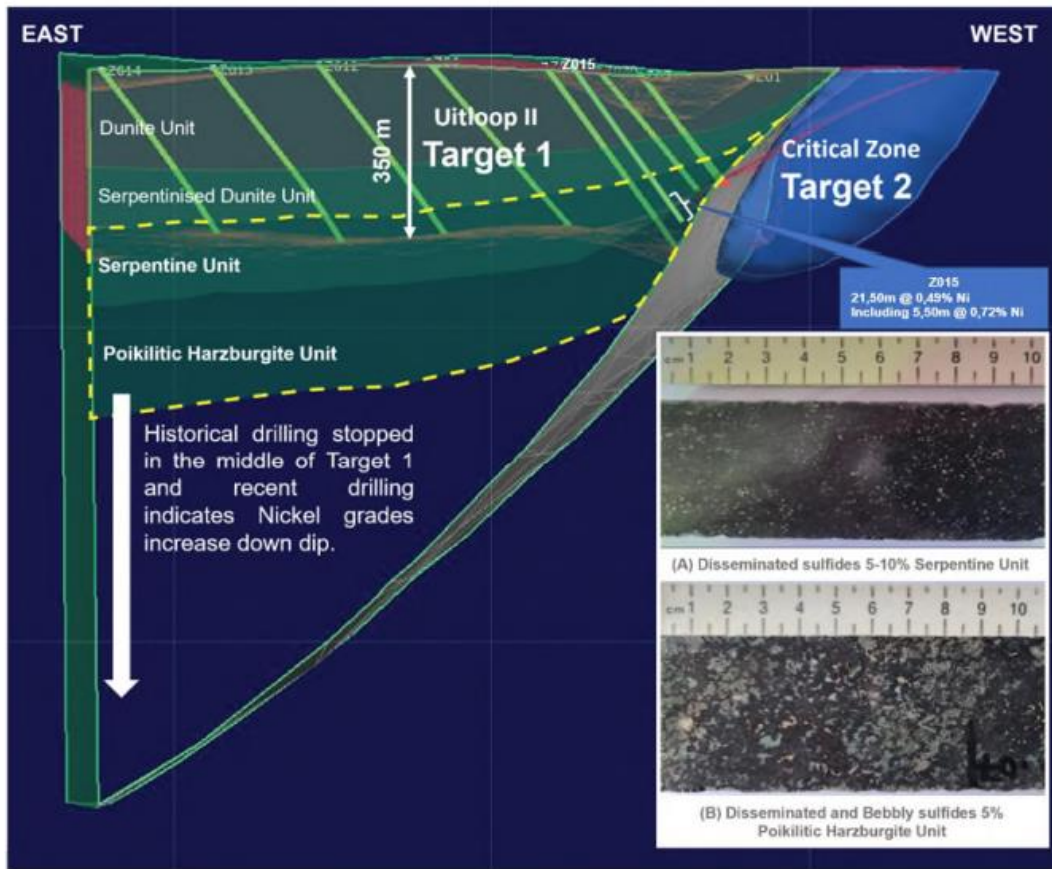


Figure 5: A section through the Lower Zone Uitloop II body showing that majority of the historical drillholes stopped in the Serpentinised Dunite Unit or at the top of the Serpentine Unit. Photo A and B shows the increased sulfide content of 5 - 10% that are disseminated and blebby in nature associated with the Serpentinised Unit and Poikilitic Harzburgite Unit. The yellow dashed area represents the potential higher grade nickel mineralization adjacent to and below the area considered in developing the Historical Resource Estimate.

The development of a three-dimensional geological model has allowed the Company to better focus the next phase of exploration, which will include infill drilling on the gold targets with the aim of declaring a resource on the gold mineralization. The infill diamond drilling campaign is designed in a way that will test all four targets in one drilling program.

On April 19, 2023, the Company announced that an airborne geophysical survey is being conducted over the Zeb Project area by a third party. The data from the geophysical survey should be received in July 2023. Once received, the Company will be processing the data to better understand the geology and geological structure of the Zeb Project area, the distribution of known nickel and nickel-copper platinum group element (Ni-Cu-PGE) mineralization and identify any potential new targets that may host nickel mineralization. Previous holes drilled at the Zeb Project has revealed higher-grade sulfide nickel zones (1.67% over 2.25 m) and Ni-Cu-PGE mineralized zones at the base of the area used in developing the Historical Resource Estimate. The location of these mineralized zones will be correlated with the results from the geophysical survey, allowing for the identification of targets that may contain similar styles of mineralization.

On April 26, 2023, the Company announced that exploration drilling has commenced at the Zeb Nickel Project Area. This phase of exploration drilling will simultaneously target three mineralized zones, as shown in Figure 6 below:

1. a higher-grade nickel mineralized zone identified at the base of the historical drilling within the ZEB 1 mineralized package;

2. The last completed exploration program discovered nickel-copper-platinum group element (Ni-Cu-PGE) mineralization located adjacent to and beneath ZEB 1, this style of mineralization is referred to as Target 2. Target 2 was intersected in 10 previous drillholes and accounts for approximately 3000 meters of drilling.
3. Massive to semi-massive Ni-PGE mineralization associated with what appears to be an ultramafic “plumbing system” beneath and to the east of Zeb 1.

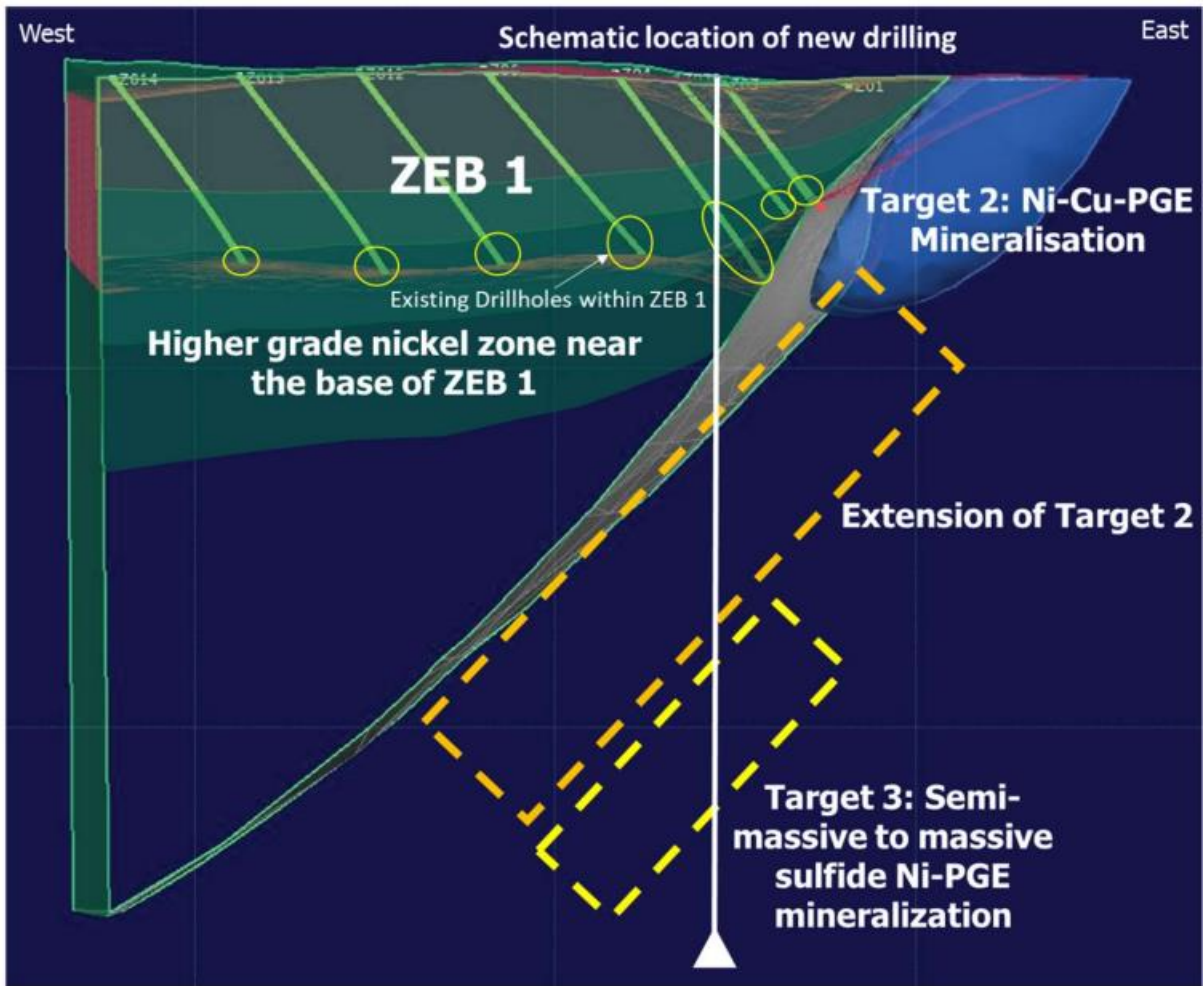


Figure 6: Schematic geological cross section showing 7 of the 32 existing drillholes, and the location of the new drilling planned to intersect higher-grade nickel near the base of ZEB 1, the down dip extension of Target 2; and semi-massive to massive nickel sulfide mineralization (Target 3).

This next phase of drilling, which started in April 2023, will ultimately assist the Company in:

- the declaration of a mineral resource estimate that includes the area used in developing the Historical Resource Estimate;
- delineate a new resource estimate that increases the overall grade and tonnage from that contained Historical Resource Estimate by targeting the geological units where there are higher nickel grades;
- delineate a new resource estimate that increases the grade and tonnage of the Historical Resource Estimate within Critical Zone (Target 2) lithologies;
- test the extent of the gold discovery.

SUMMARY OF QUARTERLY RESULTS

The Company was incorporated on November 6, 2020, comparative figures prior to that are not available. The following is a summary of the Company's financial results for the most recently completed quarters which have been prepared using accounting policies consistent with IFRS:

Quarterly period ended	Mar 31 2023 \$	Dec 31 2022 \$	Sep 30 2022 \$	June 30 2022 \$
<i>Net revenues</i>	Nil	Nil	Nil	Nil
<i>Net loss for period</i>				
<i>Total</i>	(430,258)	(216,411)	(223,654)	(217,267)
<i>Per share</i>	(0.01)	(0.00)	(0.00)	(0.00)

Quarterly period ended	Mar 31 2022 \$	Dec 31 2021 \$	Sep 30 2021 \$	July 31 2021 \$
<i>Net revenues</i>	Nil	Nil	Nil	Nil
<i>Net loss for period</i>				
<i>Total</i>	(326,403)	(334,283)	(669,280)	(20,000)
<i>Per share</i>	(0.01)	(0.02)	(0.02)	(167)

Fiscal 2022

During the quarter ended March 31, 2023 the Company's loss of \$430,258 increased from a loss of \$216,411 incurred during the three months ended December 31, 2022. The decrease in loss is primarily due to higher office and professional fees.

During the quarter ended December 31, 2022, the Company's loss of \$216,411 decreased from a loss of \$223,654 incurred during the three months ended September 30, 2022. The decrease in loss is primarily due to lower share-based compensation, office and professional fees.

During the quarter ended September 30, 2022, the Company's loss of \$223,654 increased from a loss of \$217,267 incurred during the three months ended June 30, 2022. The increase in loss is primarily due to office and professional fees related to general legal administrative services.

During the quarter ended June 30, 2022, the Company's loss of \$217,267 decreased from a loss of \$326,403 incurred during the three months ended March 31, 2021. The decrease in loss is primarily due to the increased of share-based compensation from the vest of option, filing and regulatory fees, management fees, and professional fees related to general legal administrative services.

During the quarter ended March 31, 2022, the Company's loss of \$326,403 increased from a loss of \$334,283 incurred during the three months ended December 31, 2021. The increase in loss is primarily due to the increased of share-based compensation from the vest of option, filing and regulatory fees, management fees, and professional fees related to general legal administrative services.

Fiscal 2021

During the quarter ended December 31, 2021, the Company's loss of \$334,283 decreased from a loss of \$669,280 incurred during the three months ended September 30, 2021. The decrease in loss is primarily due to the decrease of share-based compensation from the grant of option, and professional fees related to legal services for the RTO transaction.

During the quarter ended September 30, 2021, the Company's loss of \$669,280 increased from \$nil during the three months ended June 30, 2021. The increase in loss is primarily due to listing expenses related to the RTO.

RESULTS OF OPERATIONS

Three months ended March 31, 2023

During the three months ended March 31, 2023, the Company had a net loss of \$430,258 (2022 - \$326,403). The loss is primarily a result of:

- i) Advertising and promotion of \$199,443 (2022 - \$Nil). The increase is due to sponsorship fees for a major conference during the current period.
- ii) Professional fees of \$66,960 (2022 - \$29,356). The increase is primarily for higher legal fees during the current period.
- iii) Share based payments of \$85,306 (2022 - \$182,651). The decrease is related to options vested during the current period.
- iv) Accretion of long-term payable of \$12,190 (2022 - \$36,691) related to interest accrued on the long-term payable during the current period.

LIQUIDITY AND CAPITAL RESOURCES

As of March 31, 2023, Company reported cash of \$116,497 (December 31, 2022 - \$424,380) and working capital deficiency of \$792,980 (December 31, 2022 - \$493,326).

The Company incurred a loss of \$430,258 for the period ended March 31, 2023. Material uncertainties as mentioned above cast significant doubt upon the Company's ability to continue as a going concern.

During the period ended March 31, 2023, the Company issued 743,944 common shares valued at \$171,107 to settle payable of \$199,443 and recorded \$28,336 gain on debt settlement in profit and loss.

The numbers included in this MD&A came from the financial statements that were prepared on the basis of accounting principles applicable to a going concern, which assumes that the Company will continue in operation for the foreseeable future and will be able to realize its assets and discharge its liabilities in the normal course of operations. If the going concern assumption was not appropriate for the financial statements, then adjustments would be necessary in the carrying values of assets and liabilities, the reported expenses, and the financial statement classifications used. Such adjustments could be material.

RELATED PARTY TRANSACTIONS

Key management personnel are those persons having authority and responsibility for planning, directing and controlling the activities of the Company, directly or indirectly. Key management personnel includes the Company's executive officers and Board of Director members.

During the period ended March 31, 2023, the Company paid or accrued:

- i) \$10,000 (2022 - \$15,000) in management fees to the former CEO.
- ii) \$22,500 (2022 - \$20,000) in professional fees to an accounting firm in which the CFO has an interest.
- iii) \$12,994 (2022 - \$6,000) in consulting fees to directors of the Company.
- iv) \$45,719 (2022 - \$49,136) in exploration expenditures, relating to field work, administration and other, to a corporation who has an officer who is also a director of the Company.
- v) \$85,306 (2022 - \$104,770) in share-based compensation to directors of the Company.

At March 31, 2023, the Company had \$108,400 (December 31, 2022 - \$120,823) in accounts payable and accrued liabilities relating to amounts owed to officers and directors of the Company.

DIRECTORS AND OFFICERS

Our Board of Directors are as follows:

Richard Montjoie
Tom Panoulias
Jay Vieira
John Zorbas
Alex Spiro
Anthony James Nieuwenhuys

Our officers are:

Richard Montjoie *Chief Executive Officer*
David Cross *Chief Financial Officer*

SHARE CAPITAL

As at May 30, 2023 the Company had the following outstanding:

Common shares: 55,653,930 outstanding

Stock Options:

Exercise price	Number of options outstanding	Expiry date	Number of options exercisable
\$0.25	2,760,000	November 9, 2025	2,760,000
\$0.25	1,200,000	February 13, 2027	480,000
	3,960,000		3,240,000

FUTURE ACCOUNTING PRONOUNCEMENTS

Please refer to the condensed interim consolidated financial statements on www.sedar.com.

FINANCIAL INSTRUMENTS

Please refer to the condensed interim consolidated financial statements on www.sedar.com.

CAPITAL MANAGEMENT AND FINANCIAL RISK FACTORS

The Company considers its capital structure to consist of shareholders' equity. The Company manages its capital structure and makes adjustments to it, based on the funds available to the Company, in order to support the completion of a Qualifying Transaction. The Board of Directors does not establish quantitative return on capital criteria for management, but rather relies on the expertise of the Company's management to sustain future development of the business.

Management reviews its capital management approach on an ongoing basis and believes that this approach, given the relative size of the Company, is reasonable. There were no changes in the Company's approach to capital management during the period ended March 31, 2023. The Company is not currently subject to externally imposed capital requirements.

The Company's risk exposures and the impact on the Company's financial instruments are summarized below:

Credit Risk

Credit risk is the risk of loss associated with counterparty's inability to fulfil its obligations. The Company's management believes it has no significant credit risk as its cash is held with a major Canadian financial institution

Liquidity Risk

The Company's approach to managing liquidity risk is to ensure that it will have sufficient liquidity to meet liabilities when due. At March 31, 2023, the Company had a cash balance of \$116,497 (December 31, 2022 - \$424,380), and \$165,695 (December 31, 2022 - \$242,414) of accounts payable and accrued liabilities. The Company's accounts payable and accrued liabilities have contractual maturities of less than 30 days and are subjected to normal trade terms.

Market Risk

Market risk is the risk of loss that may arise from changes in market factors such as interest rates and foreign exchange rates prices. The Company is not exposed to any significant market risk.

As at March 31, 2023, the carrying and fair value amounts of cash, accounts payable and accrued liabilities are approximately the same because of the short-term nature of these instruments.

GENERAL RISKS

Issuance of Securities

The Company may issue equity securities to finance its activities, including to finance acquisitions. If the Company were to issue additional common shares, existing holders of such shares may experience dilution. Moreover, if the Company's intention to issue additional equity securities becomes publicly known, the Company's share price may be materially adversely affected.

Shareholder Influence

One shareholder ("URU") owns approximately 74.82% of the Company's shares on a non-diluted basis. URU may therefore be in a position to exercise significant influence over all matters requiring shareholder approval, including the election of directors, determination of significant corporate actions, amendments to the Company's articles of incorporation and the approval of any business combinations, mergers or takeover attempts, in a manner that could conflict with the interests of other shareholders. URU can exert more influence over the Company during

shareholder votes than other shareholders. As a result, the Company will be controlled by URU, whose interests may be different from those of the other shareholders. Where certain transactions, require the approval of shareholders, though URU may not be able to unilaterally authorize the transaction they may be able to unilaterally block it. This concentration of ownership and voting power may also delay, defer or prevent an acquisition by a third party or other change of control of URU and may make some transactions more difficult or impossible without the support of URU even if they are in the best interests of the shareholders. Collectively, these considerations may have a negative effect on the price of the Company's Shares. URU's interests may not be fully aligned with those of the other shareholders which, given URU's power and influence, could lead to actions that are not in the best interests of the other shareholders. For example, URU may have a different tax position from the other shareholders, which could influence its decisions regarding whether and when the Company should dispose of assets or incur new, or refinance existing, indebtedness. URU might also be motivated to take actions to retain its controlling stake in the Company at the expense of maximizing the overall value of the Company. URU's fiduciary duties and the consent rights of the shareholders may serve as a check on any such motivation, but shareholders cannot be assured that the potential divergence of URU's interests and theirs might not hurt the value of the Company Shares.

Competitive Conditions

The Company will actively compete for resource acquisitions, exploration leases, licenses and concessions and skilled industry personnel with a substantial number of other mining companies, many of which have significantly greater financial resources than the Company. The Company's competitors will include major integrated mining companies and numerous other independent mining companies and individual producers and operators.

Reliance Upon Management

The Company will be dependent upon the continued support and involvement of its principals and management. Should the Company lose the services of one or more of the principals or management, the ability of the Company to achieve its objectives could be adversely affected.

Title to Properties

The Company will diligently investigate all title matters concerning the ownership of all mining claims and plans to do so for all new claims and rights to be acquired. Any newly acquired options entitling the Company to acquire mining properties may be affected by undetected defects in title, such as the reduction in size of the mining titles and other third party claims affecting the Company's interests. Maintenance of such interests is subject to ongoing compliance with the terms governing such mining titles. Mining properties sometimes contain claims or transfer histories that examiners cannot verify. A successful claim that the Company does not have title to any of its mining properties could cause the Company to lose any rights to explore, develop and extract any ore on that property, without compensation for its prior expenditures relating to such property.

Conflicts of Interest

The Board of Directors may become directors of other reporting companies or have significant shareholdings in other resource companies and, to the extent that such other companies may participate in ventures in which the Company may participate, the Board of Directors may have a conflict of interest in negotiating and concluding terms respecting the extent of such participation. The Company and the Board of Directors will attempt to minimize such conflicts. In the event that such a conflict of interest arises at a meeting of the Board of Directors, a director who has such a conflict will abstain from voting for or against the approval of such participation or such terms. In appropriate cases, the Company will establish a special committee of independent directors to review a matter in which several directors, or management, may have a conflict. Conflicts, if any, will be subject to the procedures and remedies as provided under the BCBCA. The provisions of the BCBCA require a director or officer of a corporation who has a material interest in a contract or transaction of the corporation, or a director or officer of a corporation who is a director or officer of or has a material interest in a Person who has a material interest in a contract or transaction with the corporation, to disclose his or her interest and, in the case of directors, to refrain from voting on any matter in respect of such contract unless permitted under the BCBCA, as the case may be. Other than as indicated, the Company has no other procedures or mechanisms to deal with conflicts of interest.

Permits and Licences

The operations of the Company will require licences and permits from various governmental and nongovernmental authorities. The Company will obtain all necessary licences and permits required to carry on with activities which it proposes to conduct under applicable laws and regulations. However, such licences and permits are subject to changes in regulations and in various operating circumstances. There can be no assurance that the Company will be able to obtain all necessary licences and permits required to carry out exploration, development and extraction operations on its mining properties. See Part III: “Information concerning the Project”.

Environmental and other Regulatory Requirements

Environmental and other regulatory requirements will affect the future operations of the Company, including exploration and development activities and commencement of production on the Company’s mining properties. Such projects will require permits from various federal and local governmental authorities and such operations are and will be governed by laws and regulations governing exploration, production, exports, taxes, labour standards, occupational health, waste disposal, toxic substances, land use, environmental protection, mine safety and other matters. The Company believes it is in substantial compliance with all material laws and regulations which currently apply to its activities. Companies engaged in the development and operation of mines and related facilities often experience increased costs, and delays in production and other schedules as a result of the need to comply with applicable laws, regulations and permits. Additional permits and studies, which may include environmental impact studies conducted before permits can be obtained, may be necessary prior to operation of the Company’s mining properties and there can be no assurance that the Company will be able to obtain or maintain all necessary permits that may be required to commence construction, development or operation of ore extraction facilities at the Company’s mining properties on terms which enable operations to be conducted at economically justifiable costs. See Part III: “Information concerning the Project”. Failure to comply with applicable laws, regulations, and permitting requirements may result in enforcement actions, including orders issued by regulatory or judicial authorities causing operations to cease or be curtailed, and may include corrective measures requiring capital expenditures, installation of additional equipment, or remedial actions. Parties engaged in mining operations may be required to compensate those suffering loss or damage by reason of the mining exploration activities and may have civil or criminal fines or penalties imposed for violations of applicable laws or regulations and, in particular, environmental laws. Amendments to current laws, regulations and permits governing operations and activities of mining companies, or more stringent implementation thereof, could have a material adverse impact on the Company and cause increases in capital expenditures or production costs or reductions in levels of production at producing properties or require abandonment or delays in development of new mining properties.

Political Regulatory Risks

Any changes in government policy may result in changes to laws affecting ownership of assets, exploration policies, monetary policies, taxation, rates of exchange, environmental regulations, labour relations and return of capital. This may affect both the Company’s ability to undertake exploration and development activities in respect of present and future properties in the manner currently contemplated, as well as its ability to continue to explore, develop and operate those properties in which it has an interest or in respect of which it has obtained exploration and development rights to date. The possibility that future governments may adopt substantially different policies, which might extend to expropriation of assets, cannot be ruled out.

In recent years, the securities markets in the United States and Canada, and the Exchange in particular, have experienced a high level of price and volume volatility, and the market prices of securities of many companies have experienced wide fluctuations in price that have not necessarily been related to the operating performance, underlying asset values or prospects of such companies. There can be no assurance that continual fluctuations in price will not occur. It may be anticipated that any quoted market for the Company Shares will be subject to market trends and conditions generally, notwithstanding any potential success of the Company in creating revenues, cash flows or earnings.

Liquidity

The Company cannot predict at what prices the Company Shares will trade upon completion of the Transaction, and there can be no assurance that an active trading market in the Company Shares will develop or be sustained. Acceptance of the Exchange has not yet been obtained. There is a significant liquidity risk associated with an investment in the Company Shares. Dividends At the present time it is unlikely shareholders will receive a dividend on the Company Shares.

MINING RELATED RISKS

No Known Mineral Reserves or Mineral Resources

There are no known bodies of commercial minerals on the Project. The exploration programs undertaken and proposed constitute an exploratory search for mineral resources or programs to qualify identified mineralization as mineral resources. There is no assurance that the Company will be successful in its search for mineral resources and mineral reserves.

Exploration Risks

The Project is in early exploration stages and is without a known body of commercially exploitable ore. Exploration for mineral resources involves a high degree of risk and few properties that are explored are ultimately developed into producing mines. The risks and uncertainties inherent in exploration activities include but are not limited to: general economic, market and business conditions, the regulatory process and actions, failure to obtain necessary permits and approvals, technical issues, new legislation, competitive and general economic factors and conditions, the uncertainties resulting from potential delays or changes in plans, the occurrence of unexpected events and management's capacity to execute and implement its future plans. The discovery of mineral deposits is dependent upon a number of factors, not the least of which are the technical skills of the exploration personnel involved and the capital required for the programs. The cost of conducting exploration programs may be substantial and the likelihood of success is difficult to assess. There is no assurance that the Company's mineral exploration activities will result in any discoveries of new bodies of commercial ore. There is also no assurance that even if commercial quantities of ore are discovered that a new ore body will be developed and brought into commercial production. The commercial viability of a mineral deposit once discovered is also dependent upon a number of factors, most of which factors are beyond the control of the Company and may result in the Company not receiving adequate return on investment capital.